

reflecta

Super 8 Scanner

User Manual

FEDERAL COMMUNICATIONS COMMISSION

(FCC) STATEMENT

This Equipment has been tested and found to comply with the limits for a class B digital device, pursuant to Part 15 of the FCC rules. These limits are designed to provide reasonable protection against harmful interference in a residential installation. This equipment generates uses and can radiate radio frequency energy and, if not installed and used in accordance with the instructions, may cause harmful interference to radio communications. However, there is no guarantee that interference will not occur in a particular installation. If this equipment does cause harmful interference to radio or television reception, which can be determined by turning the equipment off and on, the user is encouraged to try to correct the interference by one or more of the following measures:

- Re-orient or relocate the receiving antenna.
- Increase the separation between the equipment and receiver.
- Connect the equipment into an outlet on a circuit different from which the receiver is connected to.
- Consult the dealer or an experienced radio/TV technician for help.

Warning:

Use only shielded signal cables to connect I/O devices to this equipment. You are cautioned that changes or modifications not expressly approved by the party responsible for compliance could void your authority to operate the equipment.

Index

TABLE OF CONTENTS

Getting Started-----	4
General Guidance-----	5
Components-----	6
Quick Installation Guide (QIG) -----	7
Installing Software and Driver-----	7
Installing Hardware-----	8
First Calibration-----	9
Install Super 8 Scanner-----	9
How to install film to Super 8 Scanner-----	9
How to clean your film with Super 8 Scanner-----	9
Additional Features-----	10
User Interface-----	11
I Setting Window Area-----	11
II Preview and Capture Film Window Area-----	11
III Preview and Combine Movie Window Area-----	12
How to Scan Super 8 Movie-----	13
STEP 1 -Create a New Movie plan-----	13
STEP 2- Capture Super 8 Film Image-----	13
STEP 3 – Preview and Setting Frame Rate-----	14
STEP 4 – Combine Movie-----	14
STEP 5 - Exit-----	15
How to Calibration Light Plate-----	16
Technical Support-----	17
Trouble Shutting-----	17

Getting Started

Check the package content before getting started.

For Quick Installation please refer to Quick Installation Guide. (Ref. Pg. 6)

Important! Save the original box, receipt and packing material for future shipping needs.

Package Contents

- Super 8 Scanner.
- Film Reel.
- Power Adapter

Warning! Using any other power adapter may severely damage the scanner and will void the product warranty.

- Power Cord.
- USB 2.0 Cable.
- Quick Installation Guide
- CyberView S8 Application software CD with User Manual PDF file.

Minimum System Requirements

OS: Windows XP with Service Pack 2 or Windows Vista (32 bit & 64 bit) or Win 7 (32 bit & 64) or Win 8 (32 bit & 64)

CPU: Intel Core 2 Duo /2G or higher processor

Memory: 4G or more

Hard Disk free space: 35GB or higher.

Note:

Reel Type	Super 8 Film at 18 frames /second	Super 8 Film at 24frames /second	Hard Disk Space Need
50 feet(15 meters)	3.5 min	2.5 min	1 GB (0.45 GB for movie)
200 feet(60 meters)	13 min	10 min	4 GB (1.8 GB for movie)
300 feet(90 meters)	20 min	15 min	6 GB (2.7 GB for movie)
400 feet(120 meters)	26 min	20 min	8 GB (3.6 GB For movie)
600 feet(180meters)	40 min	30 min	12 GB (5.4 GB movie)

Color monitor with 24-bit

Color video card 1,024 x 768 monitor resolution

GENERAL GUIDANCE:

- Only use the supplied USB-Cable. Connect the computer to the scanner directly using the USB 2.0 cable.
- Do not use a hub or extension cable. Only use the USB ports on the rear of desktop computers.
- If there are any other devices (multifunction device, printers, scanners, webcam) connected to the computer through USB, disconnect them.
- A minimum of 4GB RAM is required.

Operating Ambient Temperature Range 50° to 104°F (10° to 40°C)

Note: Do not turn on the scanner unless it is within this range. If the scanner has been stored or transported outside of this range, allow it to return to within this range before turning it on.

Operating Ambient Humidity Range 15% to 76% relative humidity
(non-condensing)

Note: If the scanner is stored or to be transported in cold temperature and then brought into a warm / humid environment condensation may occur.

This device is designed solely for private use and is not intended for commercial use. The warranty is reduced from 2 years to 1 year if errors or defects arise from inappropriate use, improper operation or stresses occur. The guarantee period of the device for private use is 2 years or 400,000 scans.

Components

Front (Figure 1):

- 1) Supply Reel (Arm)
- 2) Take-up Reel (Arm)
- 3) Feed Sprocket
- 4) Forward Button
 - **Short push(1 sec)—feeding frame one by one,**
 - **Long push(more than 3 second)--- Continuous feeding frame**
- 5) Stop Button
- 6) Rewind Button
 - **Short push and release(1 sec)—feeding frame one by one,**
 - **Long push and release (more than 3 second)--- Continuous feeding frame**
- 7) Film Rollers
- 8) Film Cleaner
- 9) Power Button

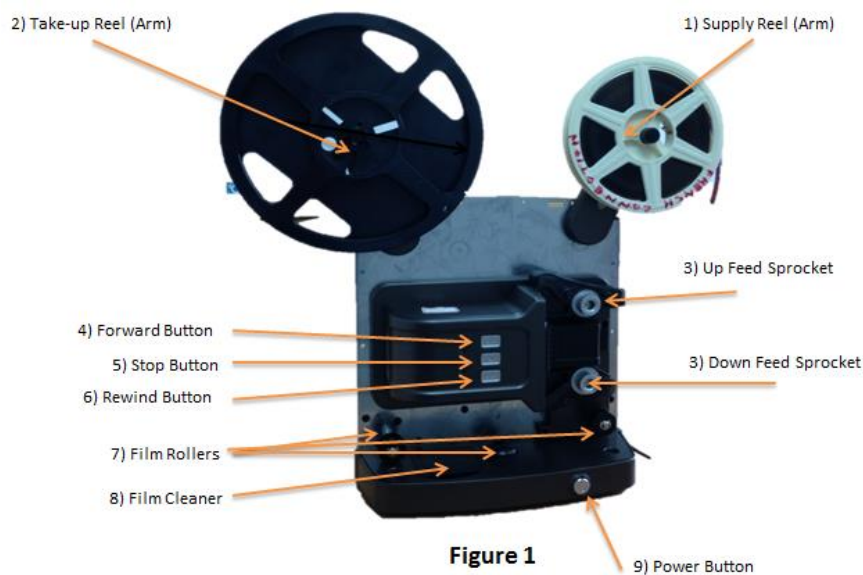


Figure 1

Back (Figure 2):

- 10) DC power
- 11) USB 2.0 port

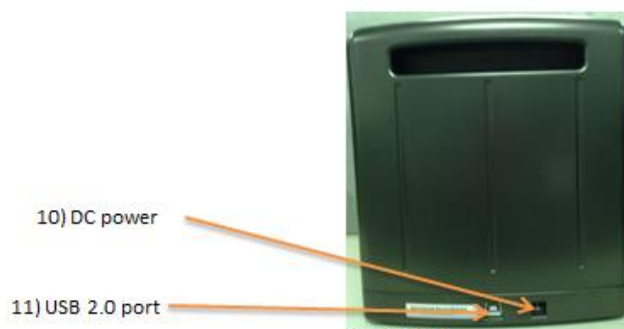


Figure 2

Quick Installation Guide (QIG)

Please check Hard Copy or PDF File in CD

Installing Software and Driver

Before Installing the Scanner Driver...

Check your Super 8 Film Reel, Film and Hard Disk Space

- Film Reel :
Super 8 Scanner support 1"~8" standard Super 8 film reel
- Film:
 1. Please make sure your film is smooth, if not please use cutter to repair and maintain to smooth
 2. If your film is splicing, please check as below list before you insert film
 - splicing parts and film hold are smooth
 - The cement is fully dryor will damage super 8 scanner
 3. Please use special solvent with Super 8 Scanner or will damage your film.
- Hard Disk Space
Please check your hard disk space before you scan.

The hard disk space list as below

Reel Type	Super 8 Film at 18 frames /second	Super 8 Film at 24frames /second	Hard Disk Space Need
50 feet(15 meters)	3.5 min	2.5 min	1 GB (0.45 GB for movie)
200 feet(60 meters)	13 min	10 min	4 GB (1.8 GB for movie)
300 feet(90 meters)	20 min	15 min	6 GB (2.7 GB for movie)
400 feet(120 meters)	26 min	20 min	8 GB (3.6 GB For movie)
600 feet(180meters)	40 min	30 min	12 GB (5.4 GB movie)

Installing Software Driver

- a. Insert driver CD into the computer CD/DVD drive and explore the contents.
- b. Double click the "**CyberView S8**" icon to begin the installation process.
Follow the onscreen prompts to complete the installation process.
NOTE: Make sure the scanner is NOT connected to the computer during the CyberView S8 driver installation.
- c. Restart computer once the installation process is complete.

Installing Hardware

Connect the Super 8 Pro Scanner to a power source.

1. Locate the power switch on the lower left side of the scanner.
2. Plug the AC adapter into an AC power source FIRST before plugging it into the scanner.
3. Attach the USB cable to the computer using the standard USB adapter end. Attach the USB adapter end of the cable to back panel of the scanner.
4. Open the reel arm.

Ensure the scanner does NOT have a film reel loaded, turn the scanner ON.
MAKE SURE THERE IS ENOUGH ROOM IN FRONT OF THE SCANNER FOR THE REEL ARM TO EXTEND FULLY.

Calibration Light Source (First time use)

1. Open the Case
2. Turn on Power
3. Connect to USB to PC
4. Wait for LED light to turn “Orange”
5. Activate the **CyberView S8** Software
6. Create a New Movie Plan and click “Next” button
7. click “**Calibration**” button
8. After Finish Calibration click “**OK**” button to finish the calibration

Note: Please make sure the film is not install to Super 8 Scanner when you do calibration function

Install Super 8 Scanner

1. Open the Case
2. Open the **Reel Arm**
3. Install movie film reel to **Supply Reel Arm** and **Take-up Reel Arm**
Note: Make Sure the Reel is securely installed
4. Turn on Power
5. Install film to Super 8 Scanner (Please see “How to install film”)
6. Connect to USB to PC
7. Wait for LED light to turn “Orange”
8. Activate the **CyberView S8** Software
9. Start to Digitize Your Super 8 Movie

How to install film to Super 8 Scanner

1. Turn on Power
2. Install movie film reel to **Supply Reel Arm** and **Take-up Reel Arm**
3. Press and hold **Forward Button**
4. Feeding film into **Up Feed Sprocket**
5. Film auto feeds out from **Down Feed Sprocket**
6. Feeding film into the **Film Rollers**, Lock your film onto the **Take-up Reel**
7. Scroll film until a sufficient length to **Take-up Reel** then press **Stop Button**
8. Feeding film into the **Take-up Reel**
9. Lock your film onto the **Take-up Reel**
10. Start to Digitize Your Super 8 Movie

How to clean your film with Super 8 Scanner

1. Install you film as “How to install film to Super 8 Scanner” Step 1~5
2. Open the cover of the **Film Cleaner**
3. Add cleaning solvent to **Wool Felt**
4. Feed Film through the wool felt
5. Feeding film into the **Take-up Reel**
6. Click **Stop Button**
7. Activate the **CyberView S8** Software
8. Click **Clean Button** to start cleaning your film

Additional Features

1 How to clean your film with Super 8 Scanner

- 1.1 Feed the film from **Take-up Reel** to **Supply Reel**.
- 1.2 Press the Rewinding button for several and release.
- 1.3 The Digitizer will fast rewind film to **Supply Reel**
- 1.4 Add Cleaning Solvent to carton block of **Film Cleaner**
- 1.5 Open the UI and click “film clean” **to clean you film**

Note:

Please make sure the carton block is wetting, you can stop the machine and add enough cleaning solvent then continue clean your film
If Carton Block is dirty please ask your distributor or connect Reflecta to buy a new one to change

2 How to fast rewind film

- 2.1 After finish digitize your movie or clean film, all the film will be reel rolled to **Supply Reel**.

- 2.2 Take the film from **Supply Reel** to **Take-up Reel**, lock your film on **Take-up Reel**.
- 2.3 Press Rewind Button, until all the film is reel rolled to **Take-up Reel**.

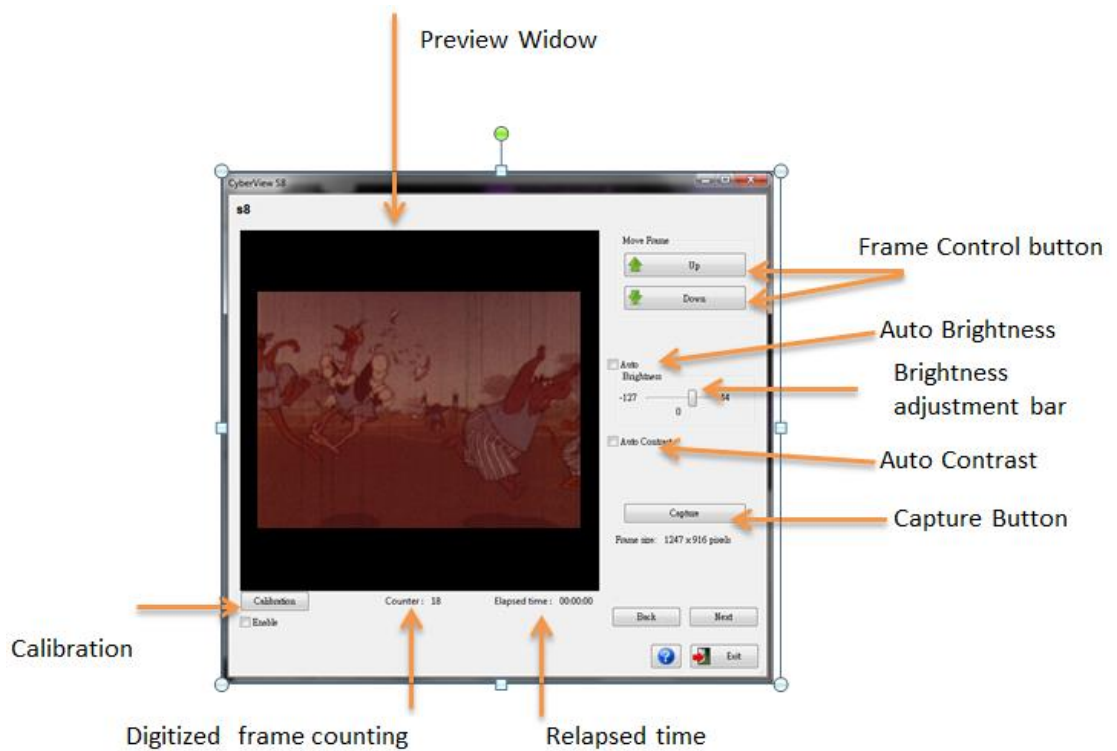
CyberView S8 introduction

User Interface List

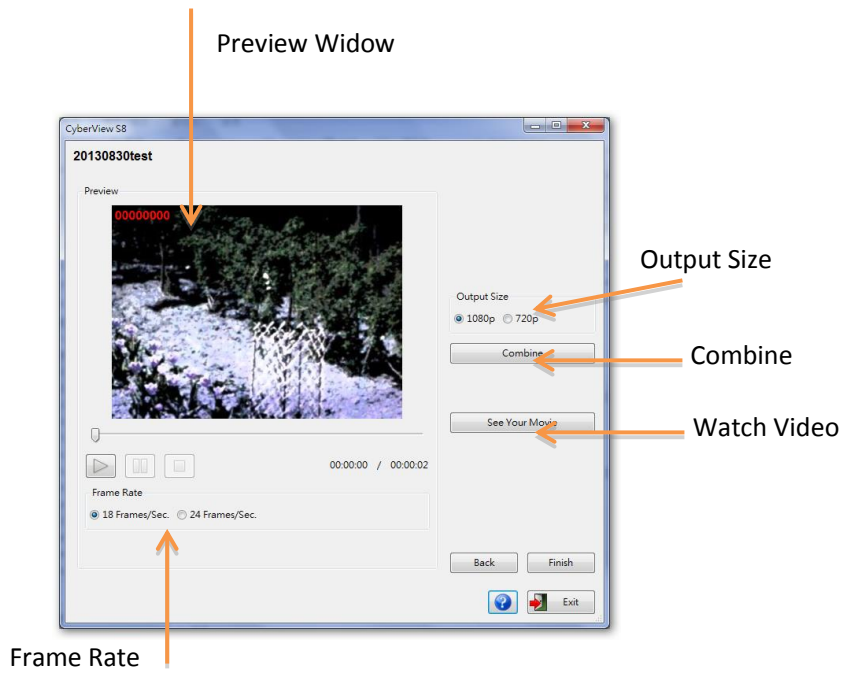
I. Setting Window Area



II. Preview and Capture Film Window Area



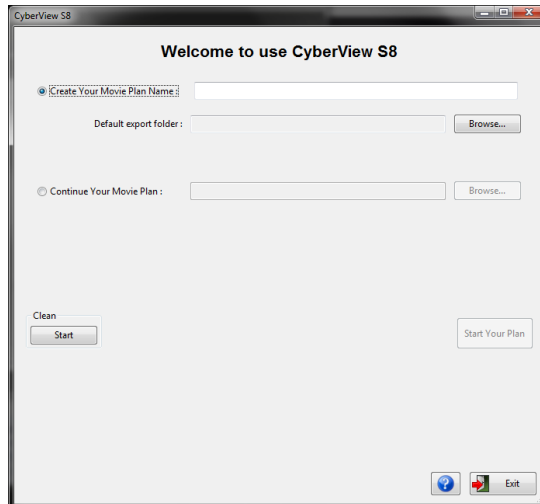
III. Preview and Combine Movie Window Area



How to Scan Super 8 Movie by CyberView S8 Software

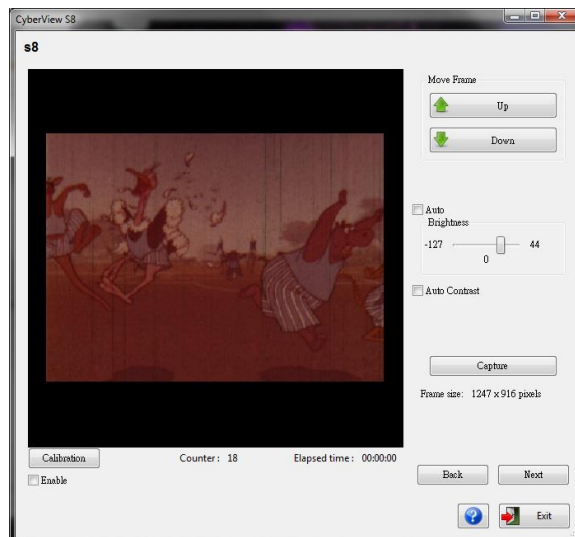
STEP 1 -Create a New Movie project

1. Choose "Create Your Movie Project name"
2. Type the Project name
3. Choose the default export folder
4. Click the "Start Your Project" to start digitizing

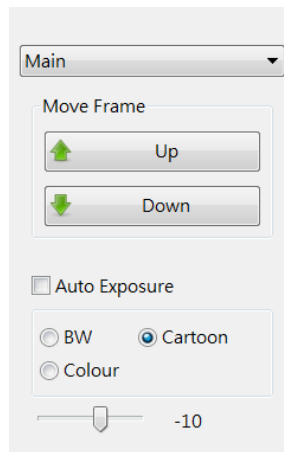


STEP 2- Capture Super 8 Film Image

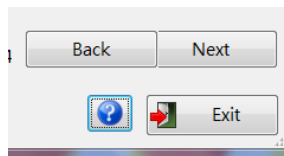
1. After inserting your film, check the preview window. Click "up" and /or "down" to align your first frame of film adjustment the crop area, to fit the film frame.



2. Choose Film type and adjustment exposure time, then Click “Capture” to start digitizing S8 movie.



3. After finishing the digitization of the S8 movie, the software will stop automatically. Click Next to preview and combine your movie.



STEP 3 – Preview and Set Frame Rate

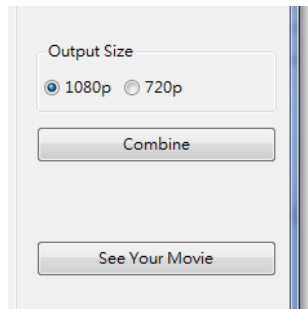
1. Check the preview window
2. Choose your super 8 movie Frame Rate(18 or 24 frame rate/ sec)



3. Click the Play  button to preview digitized frame

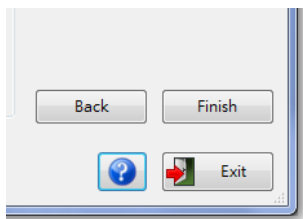
STEP 4 – Combine Movie

- 1 Choose Resolution Output size “1080p” or “720p”



- 2 Click "Combine" to transfer frame to your movie
 - 2.1.1 After combining the movie frames, you can click "See Your Movie" to watch the digitized super 8 movie

STEP 5 – Exit

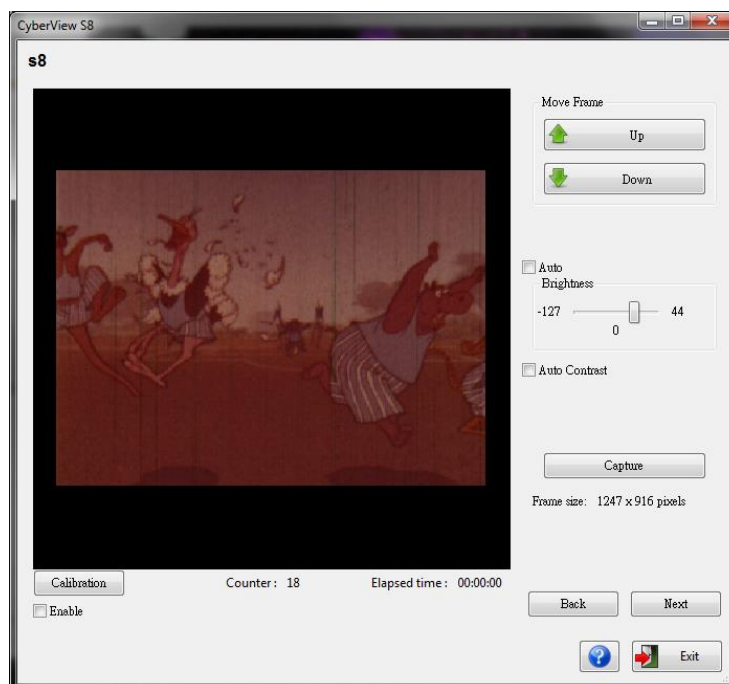


How to Calibration Light Plate

Note: Please do calibration when you first install CyberView S8. Reinstall software or scanner already use more than 6 months please do calibration

1. Open the Case
2. Turn on Power
3. Connect to USB to PC
4. Wait for LED light to turn “Orange”
5. Activate the **CyberView S8** Software
6. Create a New Movie Plan and click “Next” button
7. click “**Calibration**” button
8. After Finish Calibration click “**OK**” button to finish the calibration

Note: Please make sure the film is not install to Super 8 Scanner when you do calibration function



Technical Support

CyberView S8

For information regarding the film scanner and CyberView S8 driver, please visit www.reflecta.de.

Transportation

For safety purposes, follow the procedure below before transporting the scanner (i.e. before moving the scanner from one location to another or packing and shipping the unit):

1. Plug in the power adaptor. Turn on the power switch.
2. Wait for the scanner to warm up (around 50 seconds). The LED indicator will always blink during warm up.
3. After LED indicator turns ON, turn off the power switch.